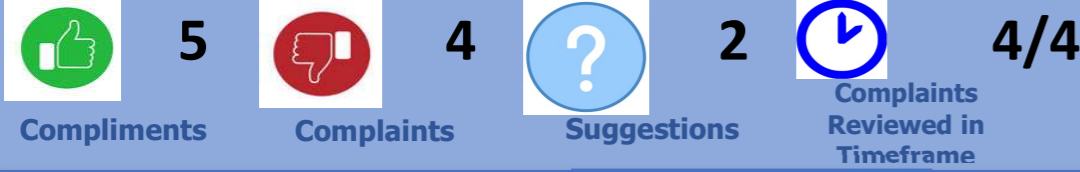


OPERATIONAL DASHBOARD



January 2024

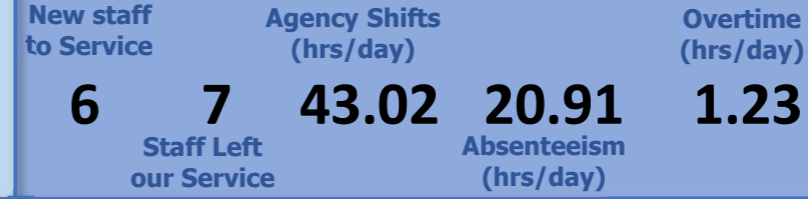
CONSUMER FEEDBACK



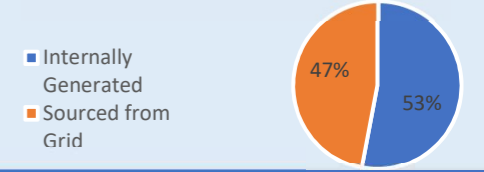
PARTNERING WITH CONSUMERS



PEOPLE AND CULTURE



ENERGY SAVING



INCIDENTS



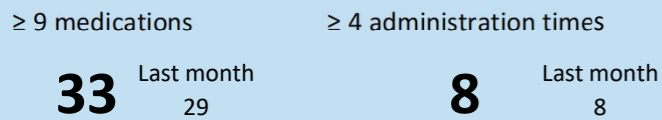
OCCUPANCY (Beds filled each day)



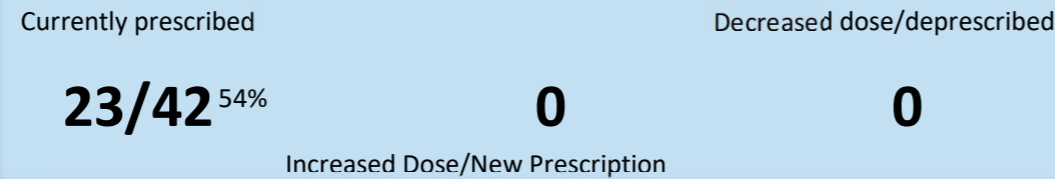
SERVICE DELIVERY



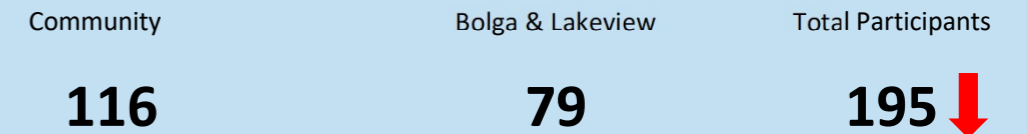
RESIDENTIAL POLYPHARMACY



RESIDENTIAL ANTIPSYCHOTICS



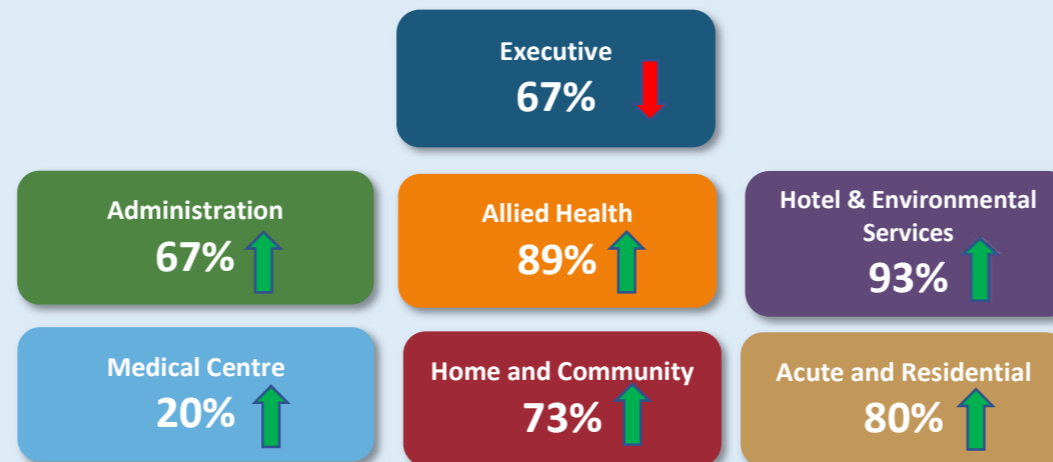
EXERCISE GROUP PARTICIPATION



EDUCATION OPPORTUNITIES

ALS Certification RN's Only Expression of Interest: 18th and 19th April, 21st and 22nd August, 7th and 8th November		Advanced Deteriorating Patient Study Day Expression of Interest: 6th February 2024, 17 May 2024, 8 August	
First Line Emergency Course for Rural Nurses (FLEC) Expression of Interest: 16 April - 11 June (plus 12 June), 23 July - 17th September (plus 18 September)		ACT Now Nurses and Midwives: 7th March, 6th June, 12th September, 14th November	
Fetal Surveillance Education Program (FSEP) 16th February, 7th May, 8th August, 15th October			

PERFORMANCE REVIEWS COMPLETED (By Department)



THS Social City2City Walk and Talk

Join the Tallangatta Health Service team for the final City to City walk raising funds for health Sunday 18th February 2024 7.45am



Register as individual or part of the Tallangatta Health Service Team. Early bird prices available until January 31st (\$10 discount)

Friends and families and kids welcome. Register everyone under the Tallangatta Health Service team. Simply follow the link

<https://raceroster.com/registration/79f716a6-bba2-4a80-8d2c-39f068d70f9e/entry?team=601943> to register.